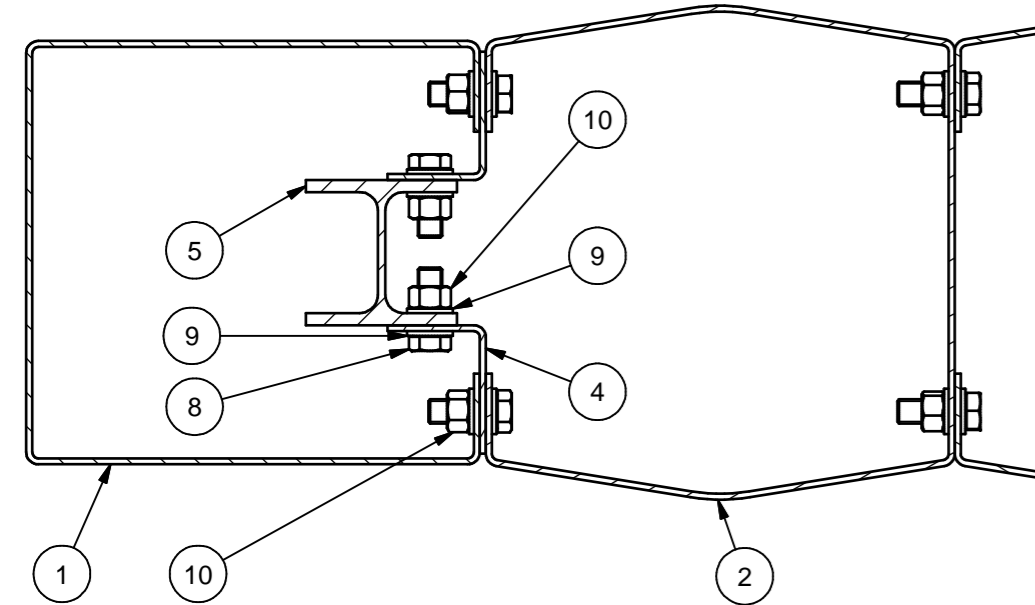
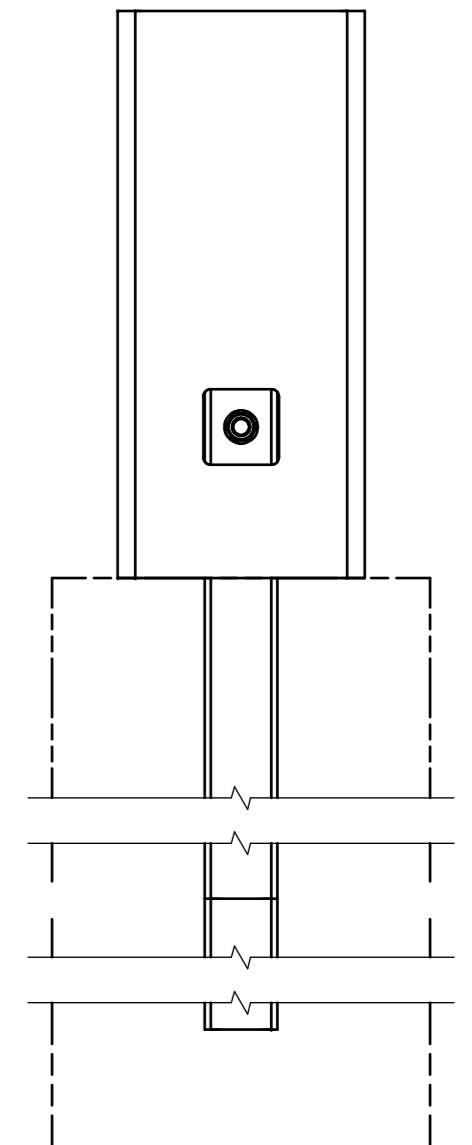
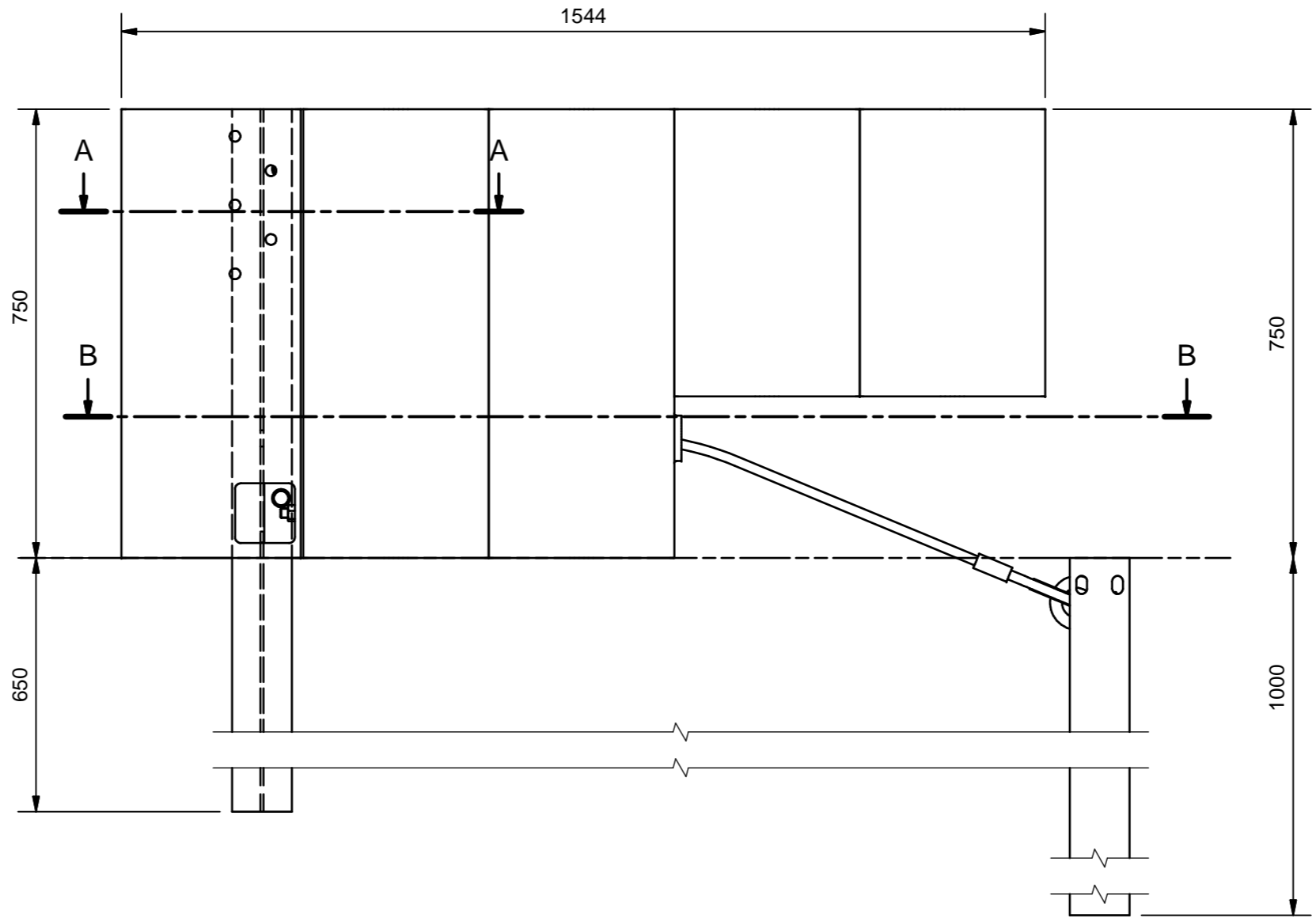
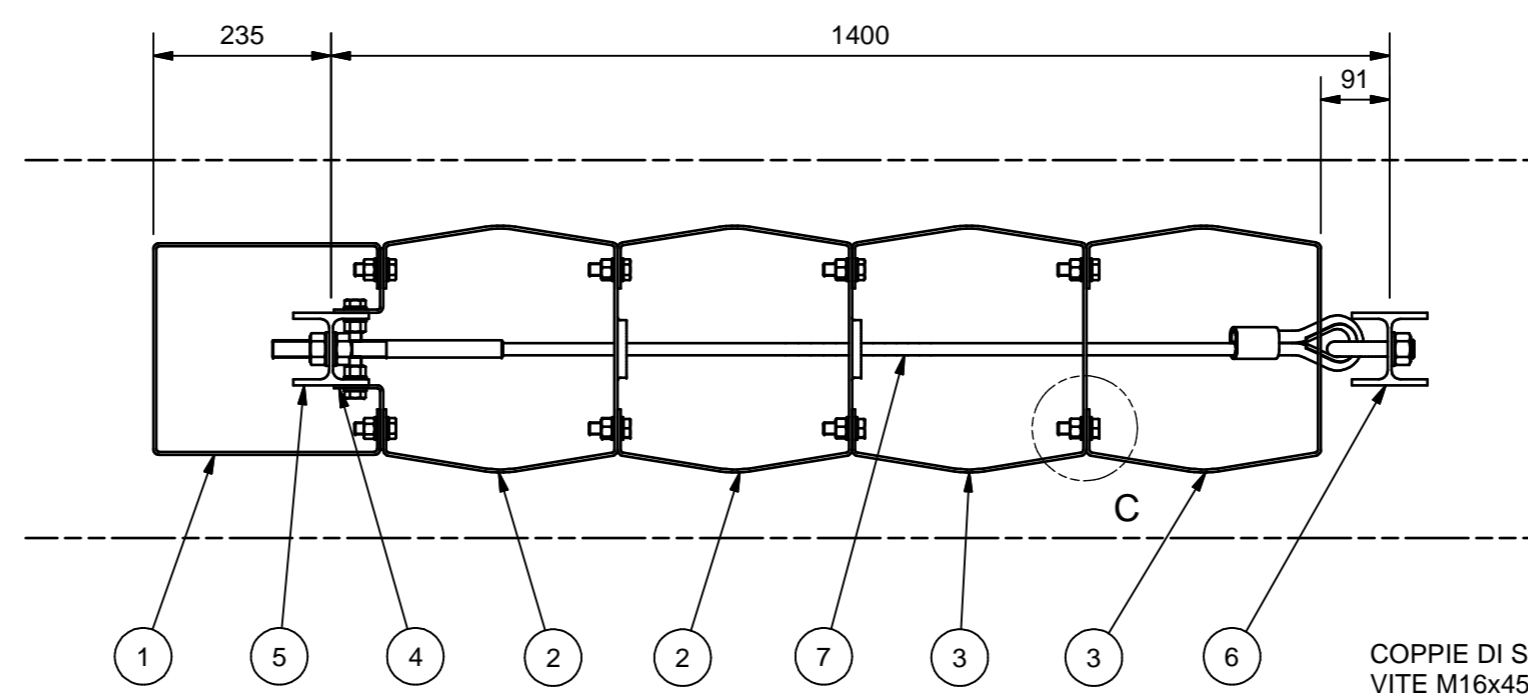


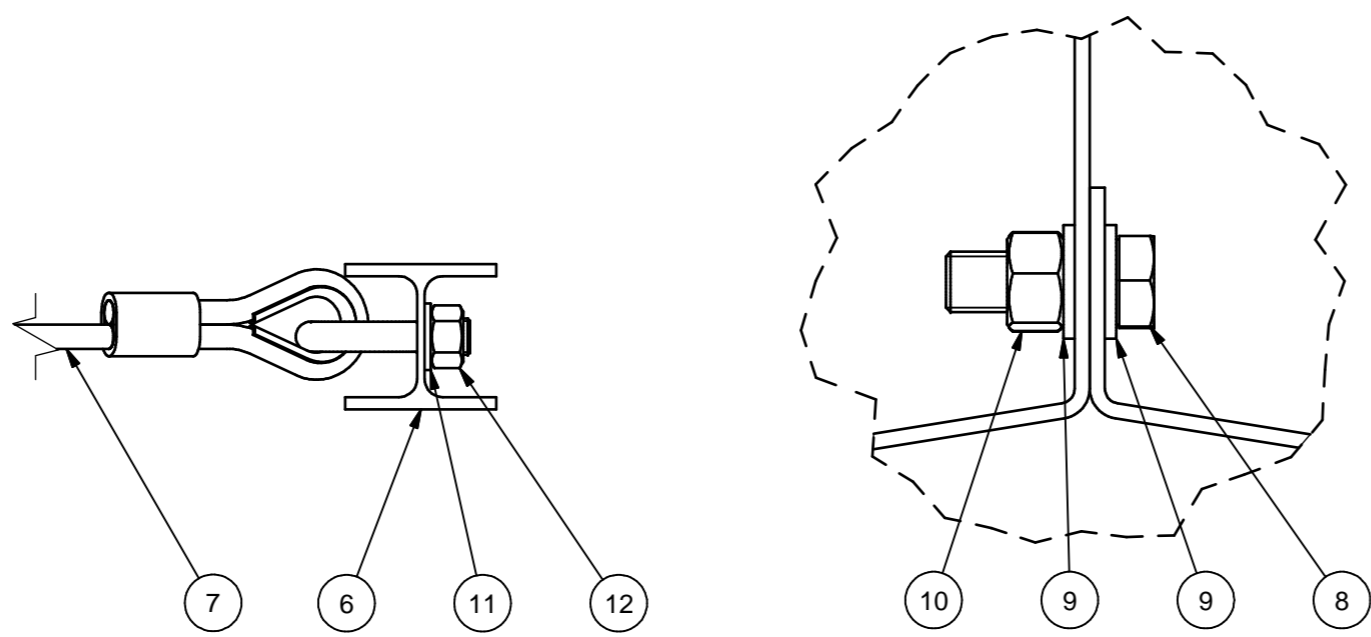
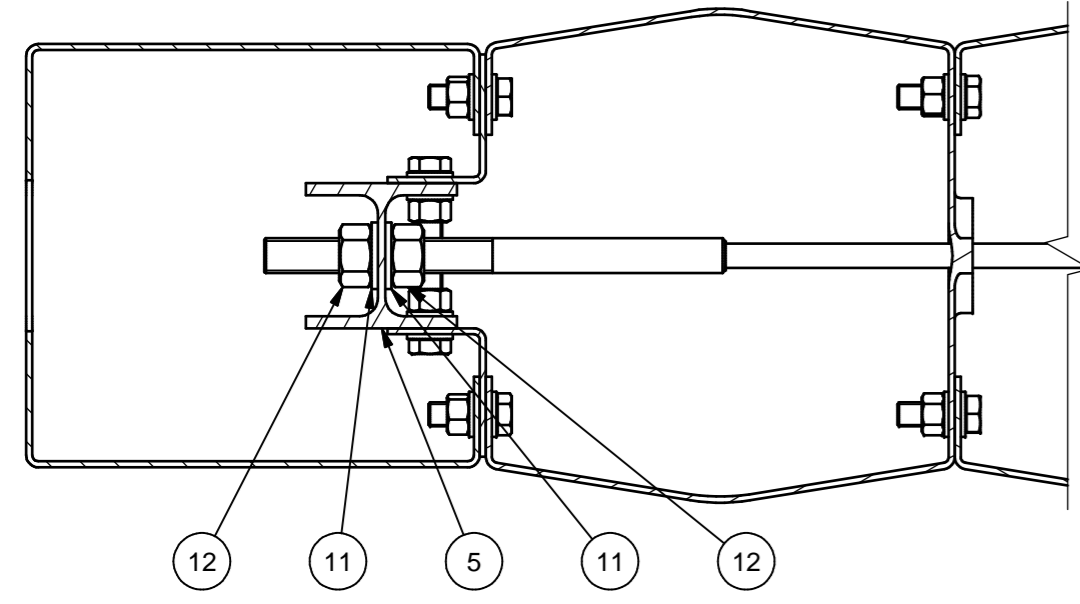
A-A (1:5)



B-B (1:5)



COPPIE DI SERRAGGIO  
VITE M16x45 + DADO M16 = 70 ±20 Nm



C (1:2)

CONFIGURATION FOR TWO WAVES BEAM

POS.	DISEGNO N°	DESCRIZIONE	MATERIALE	QTÀ	PESO[kg]
12		DADO M24 ISO 4032		8	0,13
11		RONDELLA PER M24 ISO 7089	100HV	3	0,03
10		DADO M16 ISO 4032		8	0,04
9		RONDELLA PER M16 ISO 7089	100HV	64	0,01
8		VITE M16x45 ISO 4017	8.8	32	0,11
7	56	FUNE METALLICA 16 CON MANICOTTO FILETT.M24, REDANCIA E GOLFARE M24		1	3,49
6	53	PROFILO HE100A L=1000 mm	S275JR	1	16,53
5	46	PROFILO HE100A L=1400 mm	S275JR	1	23,19
4	44	PROFILO ANGOLARE	S235JR	2	3,31
3	52	ELEMENTO D H=480 mm	S235JR	2	15,04
2	51	ELEMENTO C H=750 mm	S235JR	2	23,47
1	45	ELEMENTO A H=750 mm	S235JR	1	21,86

ELENCO PARTI					
REV. N°	DESCRIZIONE REVISIONE				SOSTITUISCE
	DISEGNATO	CONTROLLATO	APPROVATO	SCALA	FORMATO
	DATA	14/09/2014	14/09/2014	1:10	A2
	FIRMA	P.P.	S.D.	S.D.	
					OGGETTO: T50 TERMINAL, TESTED ACCORDING TO PR EN 1317-7 PESO 155,24 kg DISEGNO N° 43